

# Public Document Pack

SUPPLEMENTARY INFORMATION

INNER WEST COMMUNITY COMMITTEE 19<sup>TH</sup> NOVEMBER 2024

AGENDA ITEM 10 – LOCAL CARE PARTNERSHIPS

This page is intentionally left blank



Leeds  
**Health & Care**  
Partnership



# Intro to Local Care Partnerships (LCPs)

*What are LCPs? What do LCPs do?*

*How can you fit in?*

Local Care Partnerships Development Team, November 2024

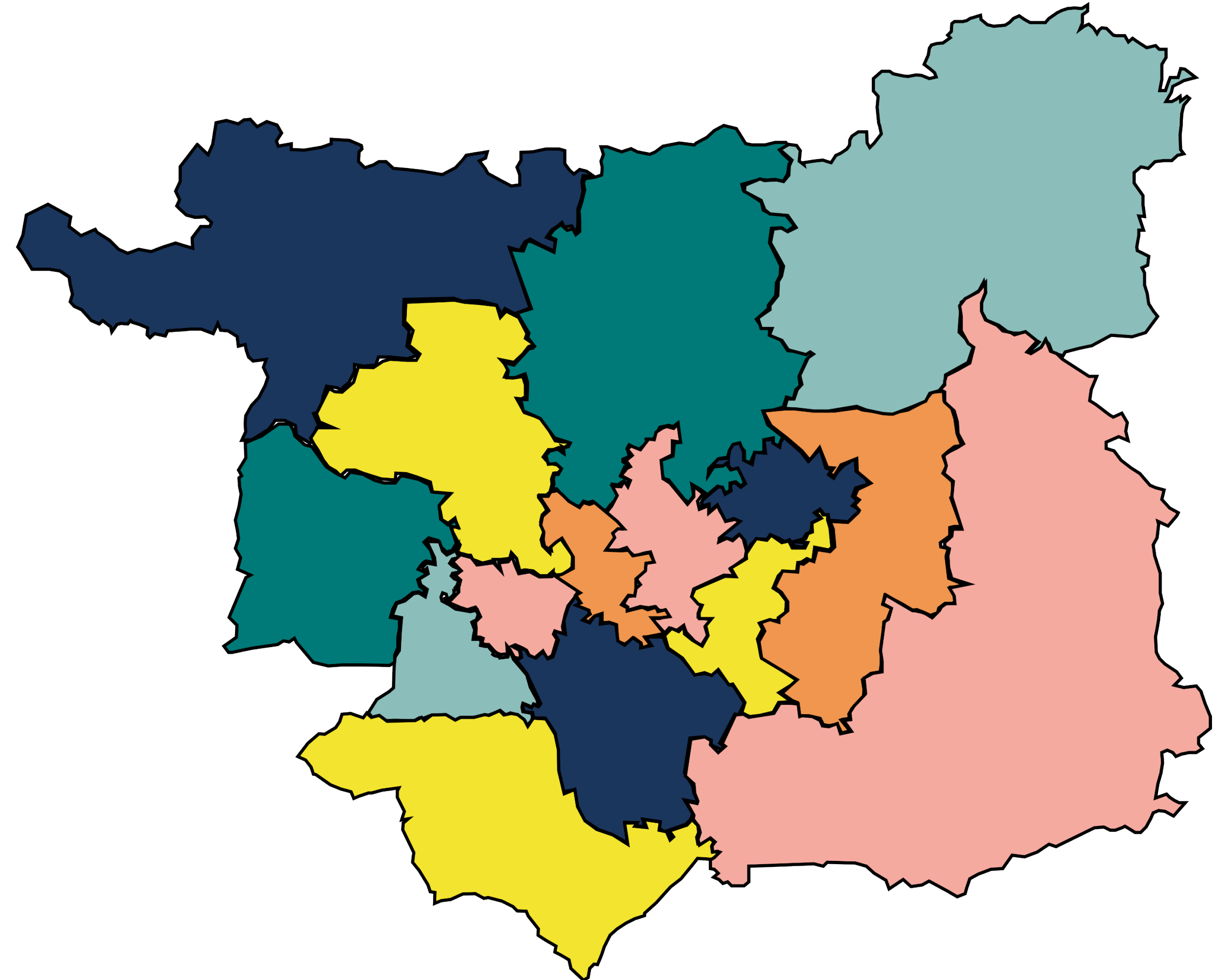
**#TeamLeeds**

# What is an LCP?

- **Local Care Partnership** is the term adopted in Leeds to describe the model of joined-up working across health and care with teams delivering ‘**local care for local people**’; ‘**working in and with local communities.**’
- Building on a history of joined-up working (integrated neighbourhood teams across community health and adult social care) and taking account of what our workforce and people in Leeds have told us.

# LCP Footprint

- *Based on Primary Care Network (PCN) footprints*
- *15 in total*
- *Shaped by the population, community, geography and assets*



## Local Care Partnerships have the twin aims of:

*Working together across health and care partners to provide joined up, personalised care*

*Tackling health inequalities, including consideration of the wider determinants of health*

# Who makes up an LCP?

*Primary Care  
Networks*

*Local Third Sector  
Organisations*

*City Wide Third Sector  
Organisations*

*Health & Social Care  
Teams*

- *Adult Social Care*
- *Neighbourhood Teams*
- *Children's & Youth Services*

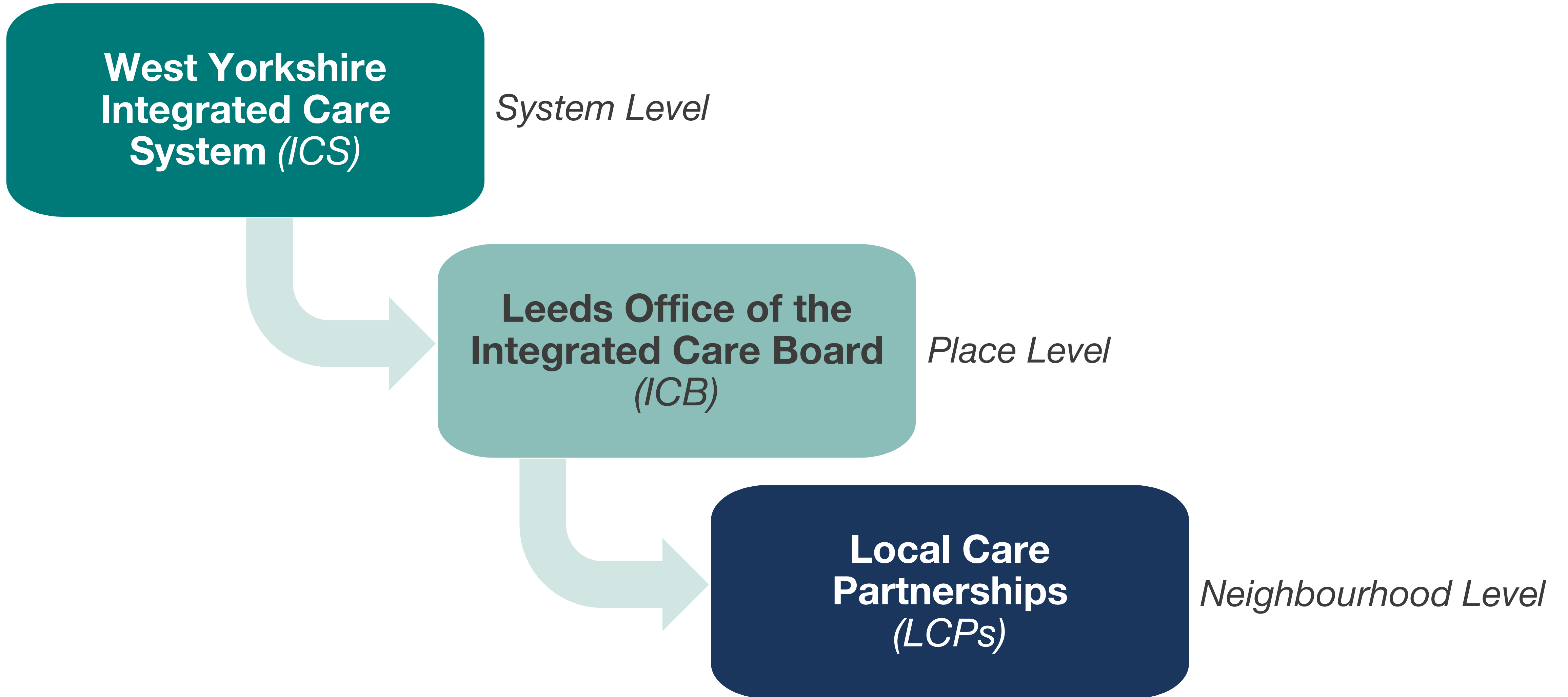
*Community  
Representatives*

- *Local Councillors*
- *Community Builders*

*Leeds City Council  
Teams*

- *Active Leeds*
- *Public Health*
- *Libraries*

# Where do LCPs fit in the system?





# Why?

- *Partnership working reduces duplication, provides a better experience for the people we support and increases job satisfaction for our workforce.*
- *Place based working allows us to tailor service delivery to local need and work with the local community to address health inequalities.*
- *More than 'just a meeting' - working in and with local communities.*



# Ways to engage:

*Local Care  
Partnership  
Meetings*

*Subgroups*

- *Task and Finish groups*
- *Pilot Projects*

*Learning  
Forums*

*Lunch and  
Learn Sessions*

*Weekly Digest*

*Dashboard*

# How do they work?

- *Each LCP has its own unique governance decided by those partners.*
- *Generally, we can break this into three main elements as below.*
- *In some LCPs this is all in one forum, a monthly LCP meeting, and in others these are separate forums with their own frequencies.*

## *Leadership*

- *Strategic planning*
- *Co-leading the LCP*

## *Working groups*

- *Task and finish*
- *Do the doing*

## *Wider LCP Forum*

- *Networking*
- *Information sharing*
- *Workshops*

# E.G.: West Leeds LCP

## *Leadership*

- *Made up of key PCN, Third Sector and Council colleagues*
- *Quarterly*
- *Online*
- *Prepare main meeting agenda*

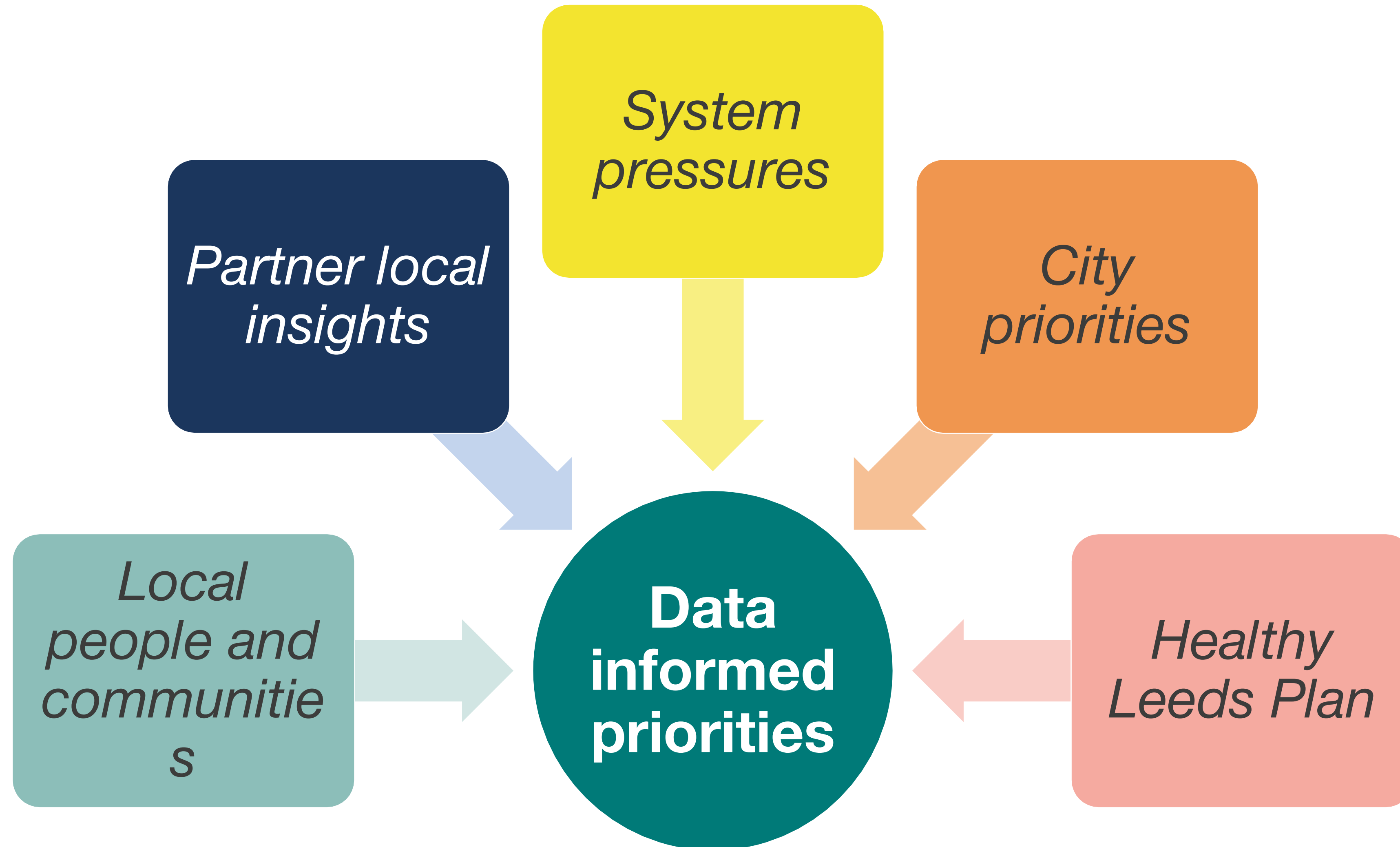
## *Working groups*

- *Healthy Leeds Plan – Children’s Respiratory*

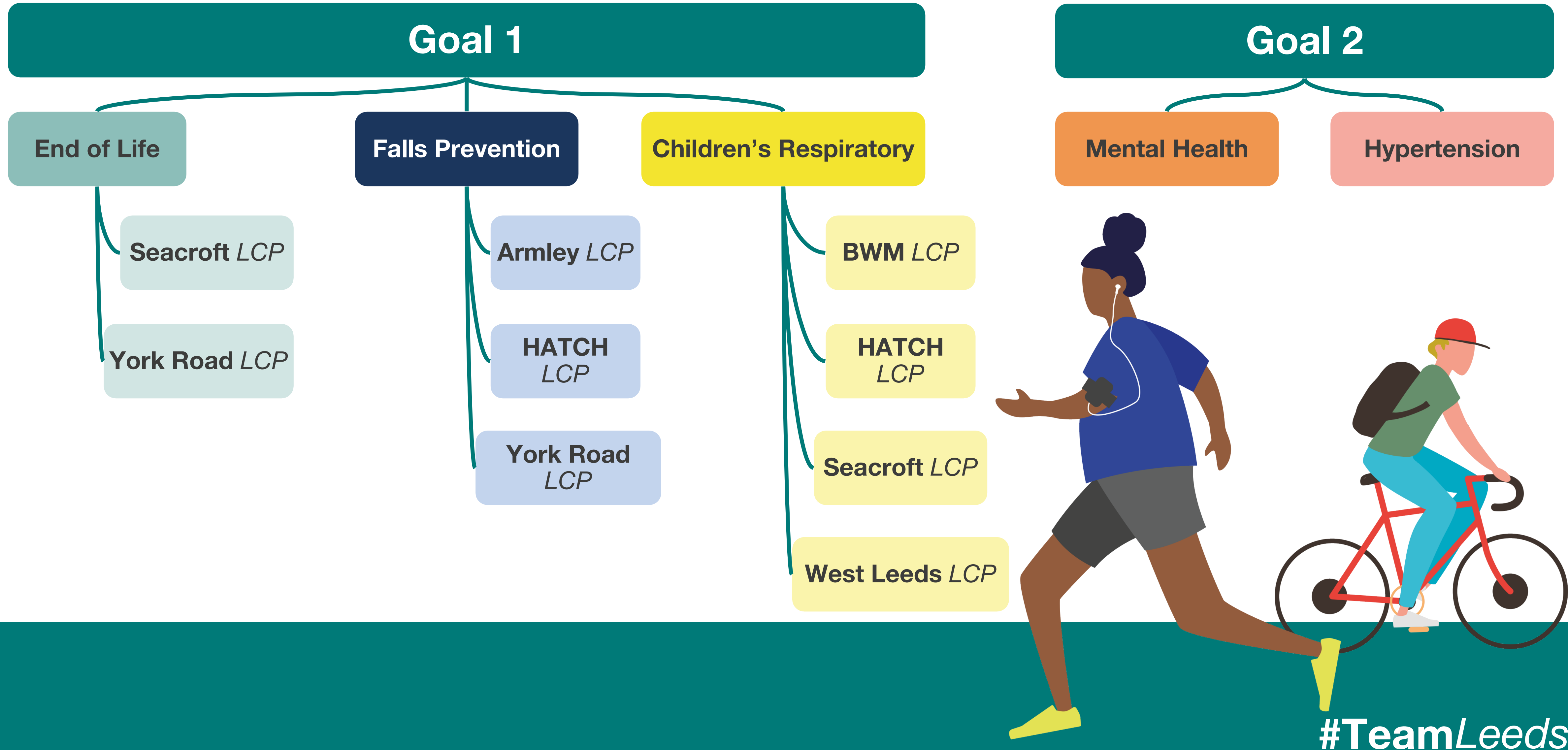
## *Wider LCP Forum*

- *Quarterly*
- *Usually in person*
- *Updates from working groups*
- *Workshops*
- *Networking*

# Determining Local Priorities



# Healthy Leeds Plan





Leeds  
**Health & Care**  
Partnership



**What does this look like in practice?**

**#TeamLeeds**

# Armley LCP Falls Prevention

- *Healthy Leeds Plan priority to reduce the frequency of fall and fractures in the Frail population and stays in hospital*
- *Partners have had a series of work shops to identify the hyperlocal reasons increasing fall probability and barriers to returning home*
- *Workstream has tied in with the pilot of the Community Health and Wellbeing Service*
- *Linking with Care Homes, Frailty Nurses, Retirement Housing, Neighbourhood Networks*



# West Leed LCP – Children’s Respiratory



Leeds  
Health & Care  
Partnership



- *Healthy Leeds Plan priority to reduce the admissions to hospital from children in West Leeds and reduce length of stay in hospital*
- *Leadership group agreed to bring workstream into the LCP*
- *First workshop held in November*
- *Partners highlighting the impact of support for new parents, access to RSV vaccinations, housing, smoking and air quality as avenues they want to explore further*

**#TeamLeeds**

# WHP LCP Digital Health Hub

- *Digital inclusion worker funded for 12 months to support organisations to sign up to the Data Bank and promote free access to WiFi*
- *Funded via 100% Digital*
- *Hosted by Better Leeds Communities*
- *Worked across the whole LCP to improve access to digital support*



#TeamLeeds

# Bramley, Wortley, Middleton LCP

## Approx 4000 residents registered with Bramley Village Health Centre

- *Link with the surgery directly outside of the main LCP to ensure the practice is aware of LCP priorities*
- *Current priorities include strengthening partner relationships, stronger third sector presence and access to Primary Care*
- *Important example of how residents define their own communities and the assets they choose to utilise*



# Armley LCP Cost of Living

- *Health inequalities funding*
- *Leadership allocated funding to several projects:*
  - *- mum and baby bundles – Armley Action Team*
  - *- travel leaflet to access primary and secondary care - Armley Helping Hands*
  - *- discretionary grants - New Wortley Community Centre*
  - *- Cost of Living Roadshows – Armley Hub and Housing Leeds*
  - *- warm space – Christ Church and New Wortley Community Centre*
  - *ABCD grants – New Wortley Community Centre*



Leeds  
**Health & Care**  
Partnership



# How can I engage with LCPs?

**#TeamLeeds**

*Any Questions?*

*Thank you for listening*



**#TeamLeeds**

# Keep in touch!

Email: [lcht.lcpdevelopment@nhs.net](mailto:lcht.lcpdevelopment@nhs.net)

Twitter: [@LCPDevelopment](https://twitter.com/LCPDevelopment)

LinkedIn: [@LCH Local Care Partnerships Development Team](https://www.linkedin.com/company/@LCH-Local-Care-Partnerships-Development-Team)

Facebook: [@LCP Development Team](https://www.facebook.com/@LCP-Development-Team)

Website: [healthandcareleeds.org/about/partners/local-care-partnerships](http://healthandcareleeds.org/about/partners/local-care-partnerships)



#TeamLeeds

This page is intentionally left blank